

DIAPHRAGM VALVES

Diaphragm valves do not have a gland seal. Thin metal discs (diaphragms), which hermetically isolate the spindle chamber from the fluid flow area, ensure the external sealing.

The main parts of the diaphragm valves are made with the

following materials:

- Hot forged brass EN 12420 - CW 617N for the body.
- Brass EN 12164 - CW 614N for spindle
- Harmonic steel for spring
- Nylon for seat sealing gaskets

TABLE 1: General characteristics of diaphragm valves

Catalogue Number	Connections		Kv Factor [m ³ /h]	PS [bar]	TS [°C]		TA [°C]		Risk Category according to PED Recast	
	SAE Flare	ODS			min.	max.	min.	max.		
		Ø [in.]								Ø [mm]
6210/2	1/4"	-	-	0,28	-	-	-	-	-	
6210/3	3/8"									
6210/4	1/2"									
6210/5	5/8"									
6210/6	3/4"									
6220/M6										-
6220/2	1/4"	-	-							
6220/3	3/8"									
6220/M10		-	10							
6220/4	1/2"	-	-							
6220/5	5/8"			16	1,80					
6220/6	3/4"	-	-	3,65						
6220/7	7/8"									

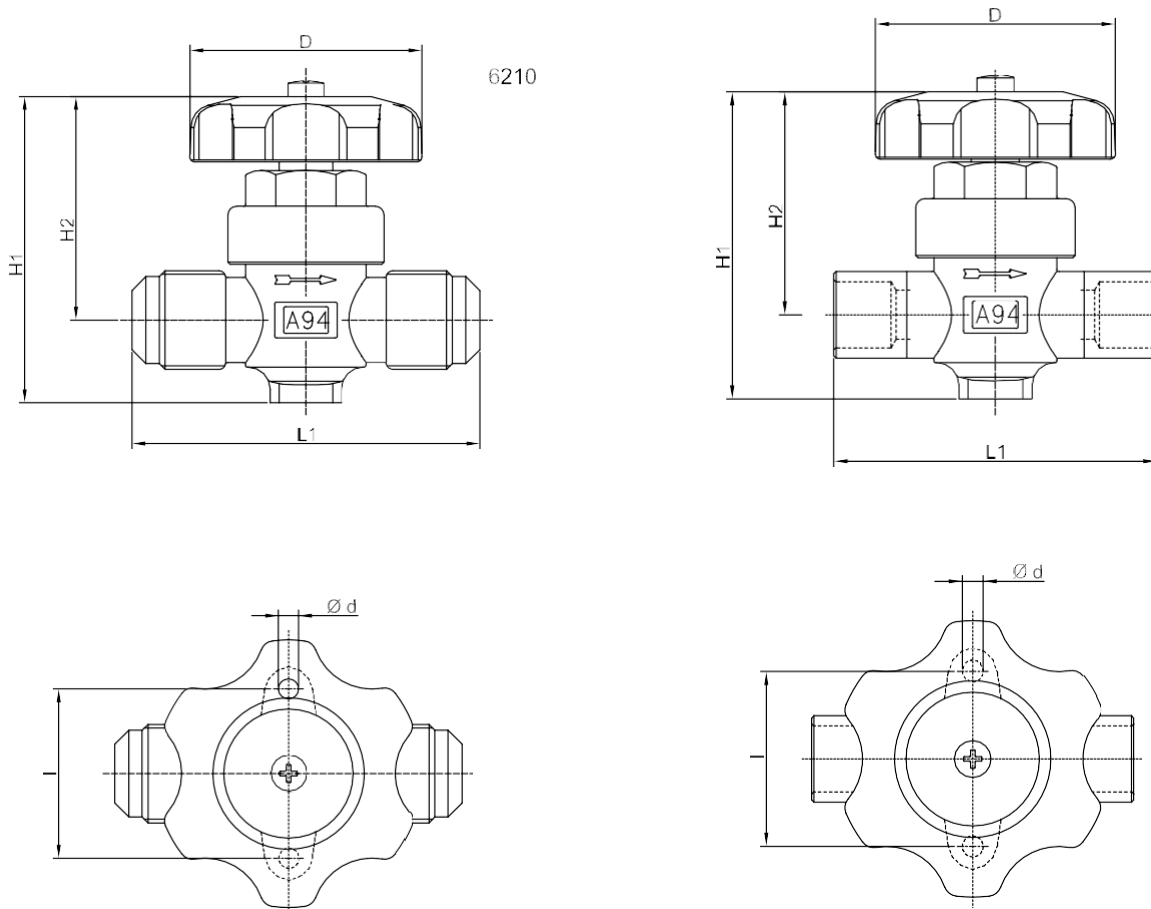


TABLE 2: Dimensions and weights of diaphragm valves

Catalogue Number	Dimensions [mm]						Weight [g]	
	H ₁	H ₂	L ₁	d	l	D		
6210/2	68	53,5	58	4,5	36	52	200	
6210/3	72		74		325			
6210/4			78		335			
6210/5	86	62,5	98	6,2	50	60	340	
6210/6	68	53,5	53	4,5	36	52	655	
6220/M6			72		61		38	195
6220/2					70			300
6220/3	86	62,5	92	6,2	50	60	305	
6220/M10			71				580	
6220/4			94				645	

